

3 FIXING STRIPS

Spacetherm CBS strips are designed to be adhesively bonded to timber and metal substrates. The strips should be cut to length prior to application, then the release liner removed and the strips secured in place using the adhesive backing. Firm pressure should be applied to ensure good bond strength is achieved, and surfaces should be clean, dry and free of contaminants prior to application. In particularly cold conditions, it may be necessary to warm the substrate using a hot air gun to ensure good adhesion is achieved.

Fixings assessed with Spacetherm CBS A2 are recommended to be Ejot TKE 4.8 x 60 or Ejot JT3-ST-2-6.0 x 60 for fixing into timber battens. Due to the nature of the fixings these will self-countersink when used to fix plasterboard therefore providing a flush finish.

Fixing centres should be assessed by the project/structural engineer to ensure that adequate fixings are used to resist any imposed or dead loads, wind loads etc that may be exerted on the insulated panels.

Other fixings are available and may be suitable. Consideration should be made to their fire resistance and advice sought from the fixing manufacturer/suppliers.

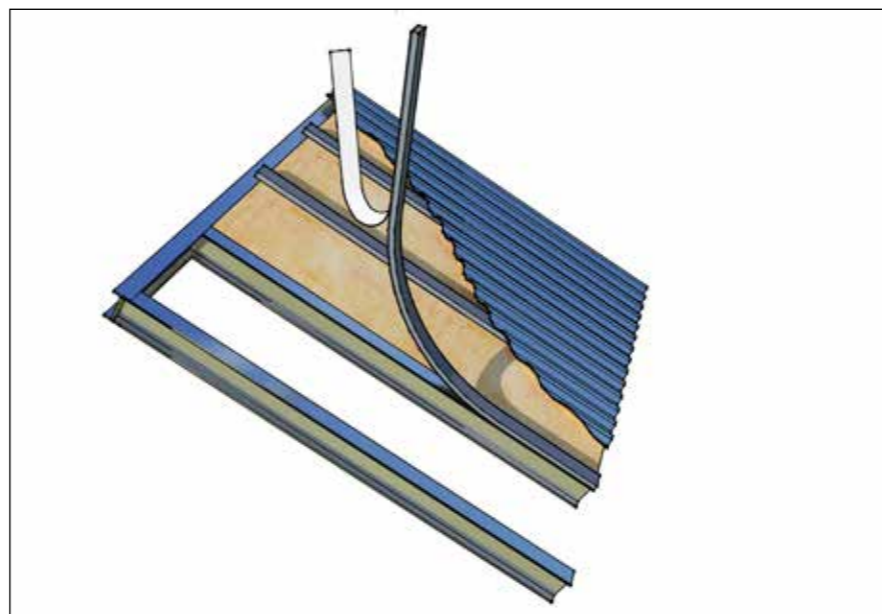


Fig. 4 Attaching Spacetherm CBS / Spacetherm A2 CBS to metal framing

Call our Technical Department

The A. Proctor Group has a dedicated Technical Department which can assist with installation details, view drawings for approval and give specialist advice on the correct use of the A. Proctor Group products.

For Technical Advice on installation details and product applications contact the A. Proctor Techline:

Telephone

01250 872261

Facsimile

01250 872727

Email

technical@proctorgroup.com

For more information contact us:

+44 (0) 1250 872261

www.proctorgroup.com

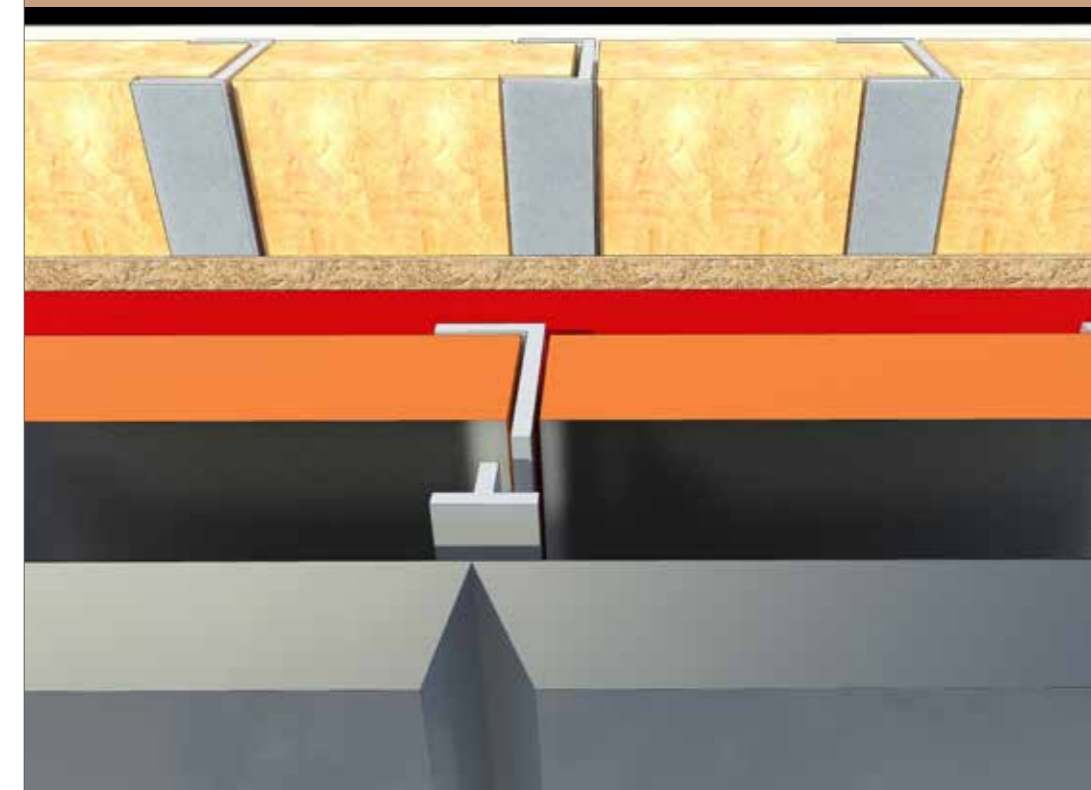
Revised Mar 2021



INSTALLATION GUIDE

SPACETHERM[®] CBS /
SPACETHERM[®] A2 CBS

THERMAL SOLUTIONS



CUST

QTY

LOT NO



1 BEFORE YOU START

- Ensure safe access and egress to the work area.
- Restrict access – control the number of people entering the work area.
- Close all unnecessary doors and seal if possible.
- Plan how you are going to carry out the work before you begin.
- Ensure surfaces to which Spacetherm CBS / Spacetherm A2 CBS is to be applied are free of dust or other contaminants.

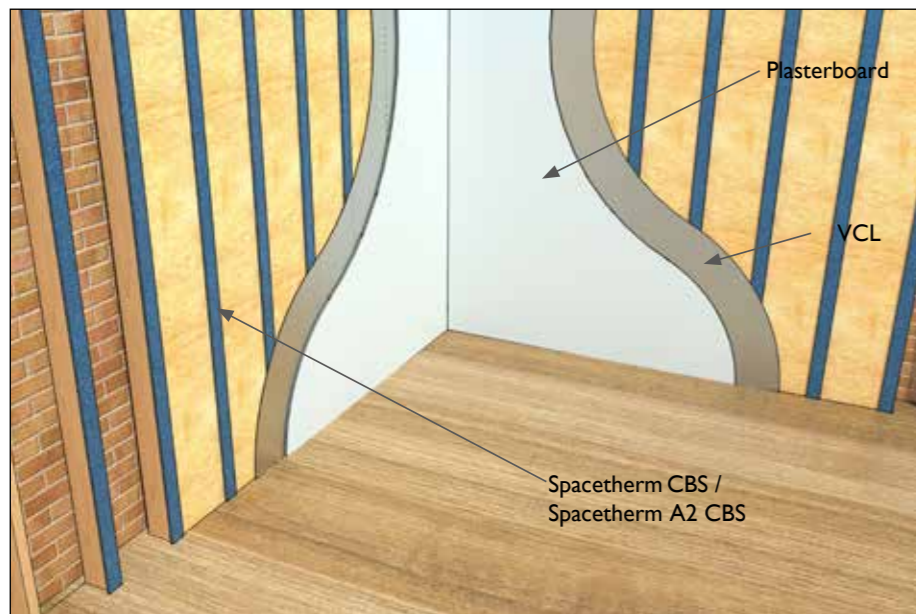


Fig. 1 Spacetherm CBS / Spacetherm A2 CBS application

2 CUTTING STRIPS

Where possible it is recommended that the strips are cut outside. If it is not possible to cut the strips outside then care should be taken to provide adequate ventilation to the internal cutting area. Any indoor cutting should be carried out over a plastic sheet to contain dust, and gloves, goggles and a dust mask should always be worn during the cutting process.

Spacetherm CBS / Spacetherm A2 CBS can be cut using knives, or heavy duty scissors/shears. It is recommended the material be compressed as far as possible prior to cutting, and care should be taken that both the insulation and the encapsulation are cut through. After cutting, the exposed edge can be sealed with tape if required.

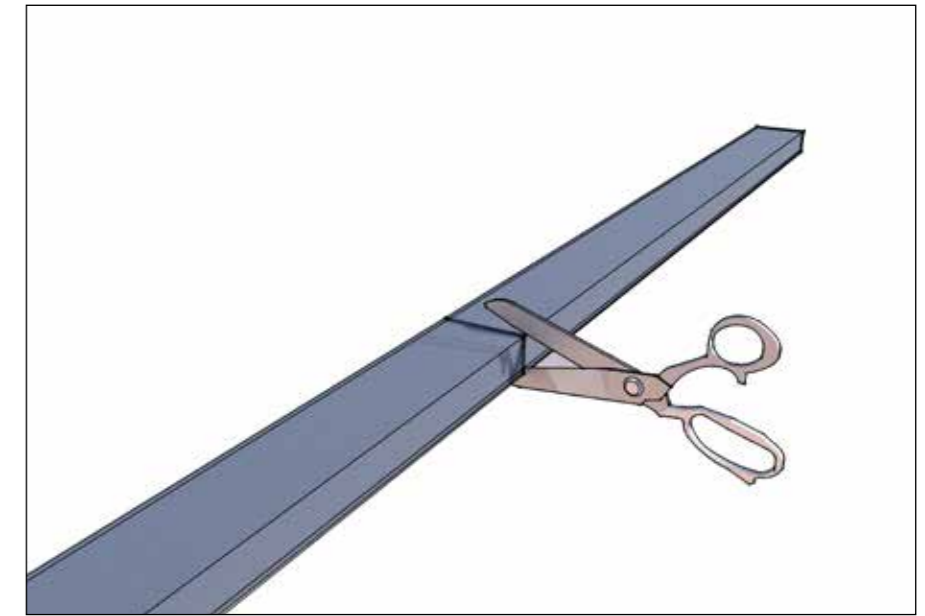


Fig. 2 Cutting Spacetherm CBS / Spacetherm A2 CBS

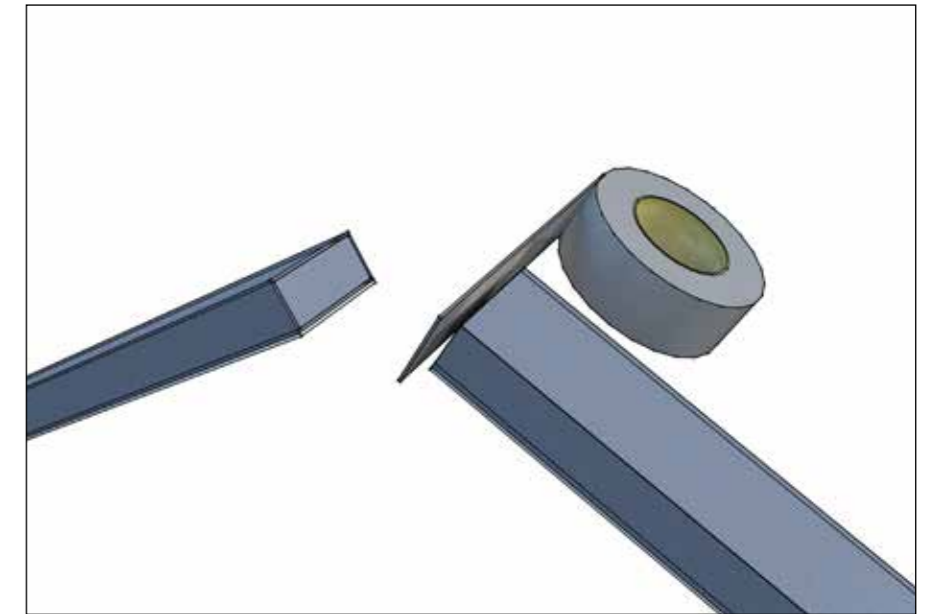


Fig. 3 Sealing cut ends in Spacetherm CBS / Spacetherm A2 CBS