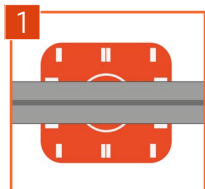


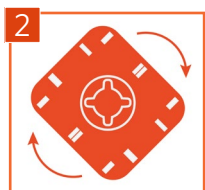
PRODUCT DATASHEET

# RDAC 'Clip-on' Self-Levelling Adjustable Decking Pedestal for Aluminium Joists

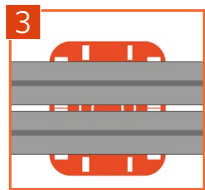
RDAC clip-on self-levelling adjustable decking pedestal supports allow RynoDeck aluminium joists to be 'clicked' into place



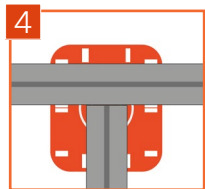
1 Single joists 'click' into place on the pedestal.



2 'Clip-on' head rotates through 90°



3 Double joists 'click' into place side by side, perfect for supporting board joints.

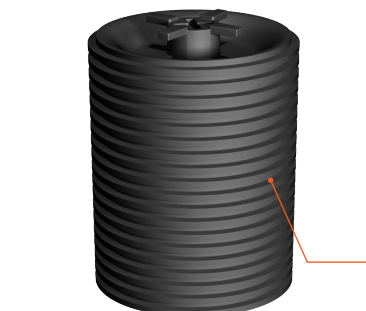


4 Versatile design allows for multi-directional applications.



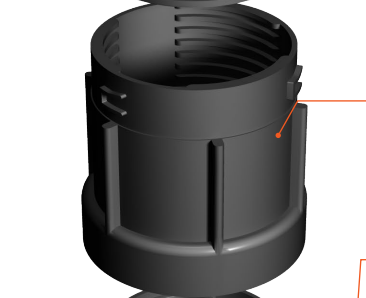
**'CLIP-ON' SELF-LEVELLING HEAD**

- Allows RynoDeck aluminium joist profiles to simply be 'clicked' into place
- Unique multi-directional head allows for single joists, double joists, and perpendicular profiles
- Incorporates self-levelling design to easily accommodate sloping areas of up to 10.5% (6°)



**ADJUSTABLE THREADED SECTION**

Easily allows millimetre perfect adjustment within given range.



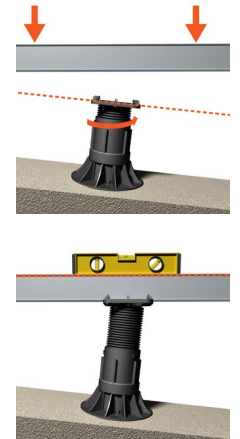
**HEIGHT EXTENSION COLLAR**

- Easy to attach with single 'click' motion
- Build up pedestals in 100mm increments



**WIDE SUPPORTING BASE**

- Evenly spreads load
- Protects membranes
- Water drainage holes prevent moisture build up
- Holes enable pedestals to be fixed to surface if required



TECHNICAL SPECIFICATION

Material	PP Polypropylene (recyclable), UV resistant		
Biological/chemical	Resistant to moulds, algae, alkali, bitumen		
Height range	RDA1-C 40-56mm RDA2-C 50-70mm RDA3-C 70-110mm RDA4-C 110-160mm RDA5-C 150-210mm	RDA6-C 200-300mm RDA7-C 300-400mm RDA8-C 400-500mm RDA9-C 500-600mm RDA10-C 600-700mm	RDA11-C 700-800mm RDA12-C 800-900mm RDA13-C 900-1000mm
Compression	2100kg (certified compression data available on request)		
Dimensions	Base 210mm/220mm Head 115 x 130mm		
Bearer capacity	Single or double aluminium joists		
Working Temperature	-40°C to 120°C		



Castlepoint  
Castle Way  
Ellon AB41 9RG

01358 726000  
sales@rynogroup.co.uk  
rynogroup.co.uk