

Procheck[®] Adapt

INSTALLATION

Preparation of the Substrate

Before installing Procheck Adapt, ensure that the surfaces are clean and dry.

Weather Conditions

Laying lightweight membranes in high wind conditions is difficult and appropriate precautions should be taken during installation.

Laps

Procheck Adapt can be rolled out either vertically or horizontally ensuring a shingled effect on the internal face of the insulation. It can be held in place by fixing back to the substrate using applicable mechanical fixings at approx. 100-150mm centres. If using the Procheck Adapt with blown insulation the centres of fixing should be reduced to 50-100mm centres. A temporary fix back to the substrate can be made by using double sided tape. Mechanical fixings should be made through the membrane into runs of double sided tape to improve air and vapour tightness. Space double sided tape evenly at max. 600mm centres.

If required for support, insulation cross battens can be utilised and internal linings can be fixed to the battens as per normal drylining practices.

Overlaps should be a minimum of 100mm wide. Procheck Adapt has integral lap tape therefore ensure that lap lines up, without undue stress, or wrinkles in lap line, before removing release liner. As the release liner is removed smooth the adhesive overlap line together and apply appropriate pressure to ensure full bonding of integrated tape to membrane. Seal overlap with Wraptite Tape.

Where an overlap or join in the membrane does not coincide with the Integrated Tape the leading edge of the overlap can be sealed using Wraptite Tape. Wraptite Tape should be installed in a similar manner to the integrated tape with appropriate hand pressure applied to ensure a continuous seal without wrinkles or folds.

Penetrations/Opening

Procheck Adapt should be cut and neatly formed around all openings and penetrations. Procheck Adapt should be made airtight with Wraptite Tape.

Puncture Damage

Where puncture damage is unavoidable, apply a good sized patch of membrane (min. 150mm beyond damaged area) over the puncture, ensuring that there is a continuous seal of Wraptite Tape all the way around the hole. For small scuff type damage of less than 25mm, double sided tape may be used as an alternative.

Details

Attention to detail is important. Procheck Adapt needs to be continuous, and particular care is required sealing around penetrations and at perimeters and junctions. If required, an acrylic primer can be used on concrete floors to aid adhesion. Please contact the A. Proctor Group for details.

Delivery & Site Handling

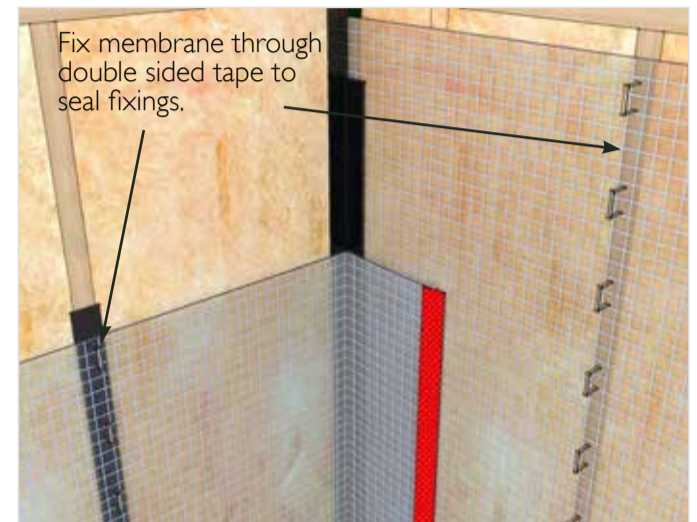
Rolls of Procheck Adapt are supplied to site with a label clearly identifying product name and grade. Rolls should be stored flat or upright on a clean, level surface and kept under cover.

Accessories:

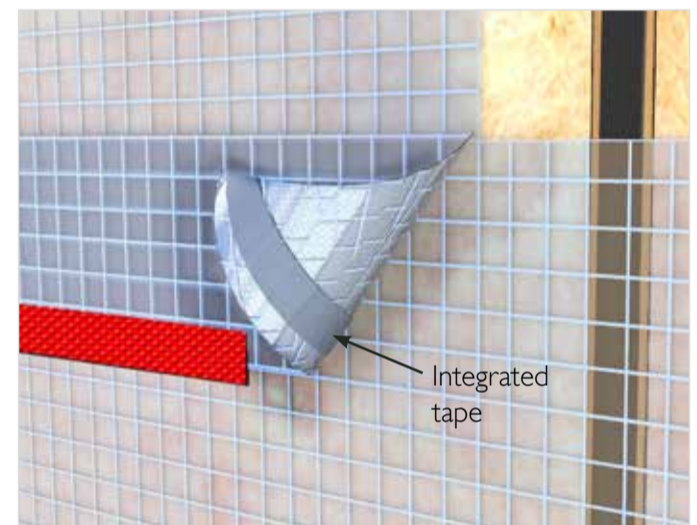
Double sided tape for temporary fix, 75mm Wraptite Tape, Acrylic primer (if required)

Health & Safety

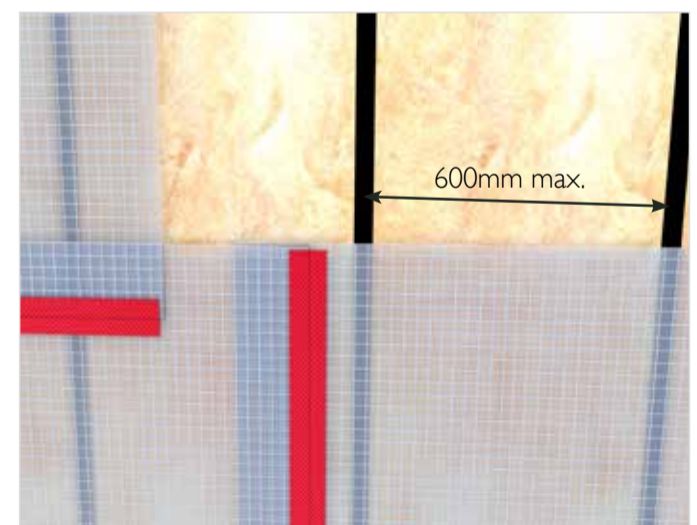
There are no health and safety hazards associated with normal usage of Procheck Adapt. For further information and details refer to the MSDS of the product.



Corner joint detail



Lap joint detail



Tape horizontal & vertical overlaps



Download a brochure from our website...

www.proctorgroup.com

contact@proctorgroup.com | +44 (0) 1250 872261

Revised May 2020

