



# MAINTENANCE FREE COMPOSITE FENCING



No colour fading  
Guaranteed for 20 years  
Retro fitting panel swap  
Full installation available



maintenance-free  
won't chip flake or rot

## VERY STRONG & SECURE EASY TO HANDLE



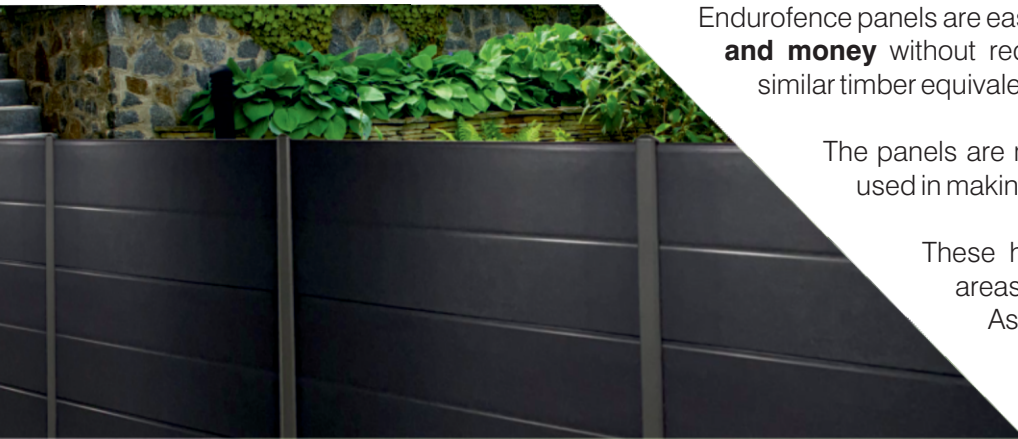
EXTREMELY TOUGH &  
HARD-WEARING



NO PAINTING OR  
TREATING NEEDED



GUARANTEED  
FOR 20 YEARS



Endurofence panels are easy to clean and look stunning, **saving time and money** without requiring year-on-year maintenance with a similar timber equivalent.

The panels are made in-house with the same technology used in making our industrial door panels.

These have been wind tested and cover open areas up to 7 metres wide x 6 metres high. Assuring you, they are more than strong enough for a 2-metres high fence panel.

Our **50mm**, thick Endurofence panel is one of the most contemporary fence panels on the market. Available in **14 colours, wood grain or textured** design, composite fencing will add style and character to any garden. You can use this high-quality fence panel as a garden barrier or residential fence for complete privacy and security.

Our panels are **Plastisol** coated and **maintenance-free**, so there is no need for ongoing painting or treatments. We are manufacturing them from profiled steel outer sheet (both sides) with a high-density insulated core for a strong, durable, weather-resistant and secure barrier.

The panels are manufactured in **500mm** and **610mm** high sections with a male and female top and bottom, making them very easy to handle. We supply every complete fence panel with a **50mm top cap** to seal any cuts in height. You can easily cut the panels with a steel-bladed jig saw or similar.

## COLORCOAT® GUARANTEE and TWO COLOUR OPTION

Endurofence panels have a **thick, durable**, abrasion-resistant topcoat. Bonded to a **galvanised substrate**, this offers outstanding **corrosion resistance** of up to **25 years** (20 years on coastal installations). Colours can be different each side, perfect for sharing costs with neighbours. **Swatches are available on request.**



## fully compatible with slotted concrete posts

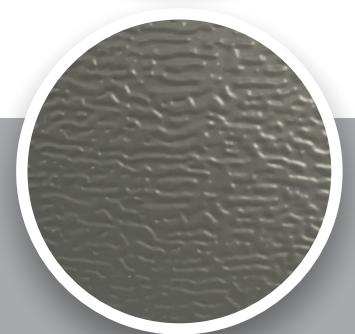
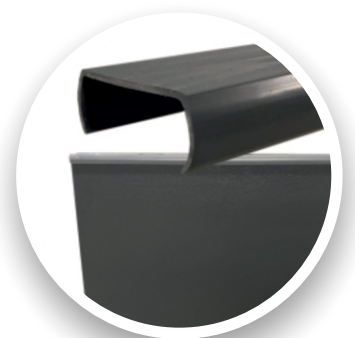
We designed our composite fence panels **to retrofit into concrete slotted posts**, and because we manufacture them as lightweight sections, they are **easy to replace existing timber panels**.

Sections come in two heights so that you can build your panels to suit concrete post systems **with or without gravel boards**.

## very easy to install eco-posts & spikes

The Endurofence posts are **effortless to install** and, like the panels, can be cut to size, made in graphite grey, complement all the fence panels available.

- Lightweight and strong, **easy to cut with a hand saw**
- **10 year guarantee**
- 1830mm high commonly used with **spike** or **bolt down** system
- 2440mm high **reinforced** used for concreting directly into the ground
- Choose from **Graphite Grey, Natural** or **Walnut** - Posts, matching post caps and end caps.



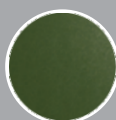
Goosewing  
Grey



Juniper  
Green



Merlin  
Grey



Olive  
Green



Vandyke  
Brown



Black



Anthracite  
Grey



Sargasso  
Blue



White



Cornflower  
Blue



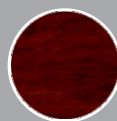
Flame  
Red



Sunflower  
Yellow



Golden  
Oak

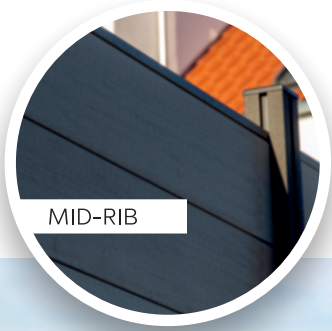


Rosewood





MULTI-RIB



MID-RIB



SOLID PANEL



# ENDUROFENCE

LONG LASTING FENCING PANELS

0800 118 5678

sales@**endurofence**.co.uk

**endurofence**.co.uk

Endurofence | 1 Dunlop Way | Scunthorpe | North Lincolnshire | Dn16 3RN

0800 118 5678 sales@**endurofence**.co.uk www.**endurofence**.co.uk

Colours are a representation only. Please ask to see our actual material samples. We reserve the right to make changes to our products without prior notification.